

HGP Open Part Number	Schematic Drawing #	Approx Weight (LBS)
HGP0020CW0S0000	31663-S	41
HGP0020CW0C0000	31663-2	45
HGP0020CW0S1000	29474-PQ1	43
HGP0020CW0C1000	29474-PQ	48

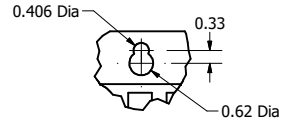
HGP Part Number	HorsePower (HP)	kVar	Harmonic	Voltage (V)	Hz.	Phase
HGP0020CW----	20	6.0	5th	600	60	3

HGP Enclosed Type 1 Part Number	Schematic Drawing #	Approx Weight (LBS)
HGP0020CW1S0000	31663-S	66
HGP0020CW1C0000	31663-2	70
HGP0020CW1S1000	29474-PQ1	68
HGP0020CW1C1000	29474-PQ	73

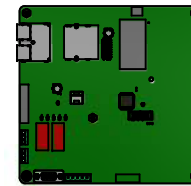
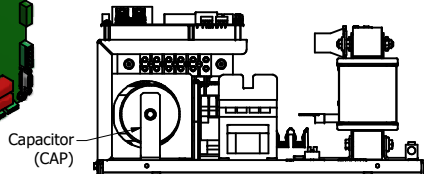
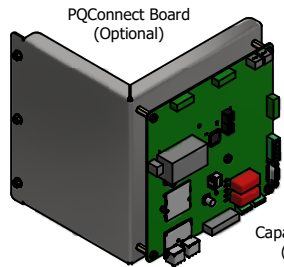
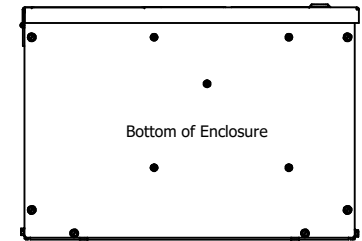
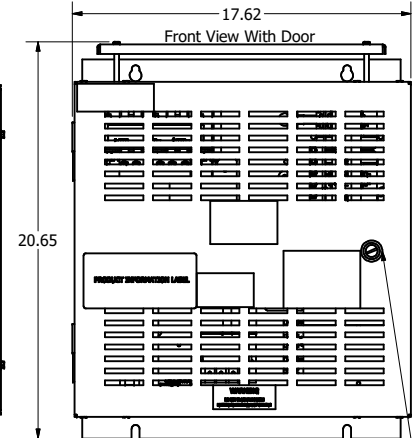
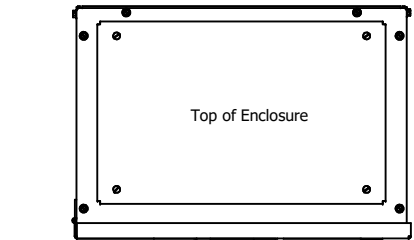
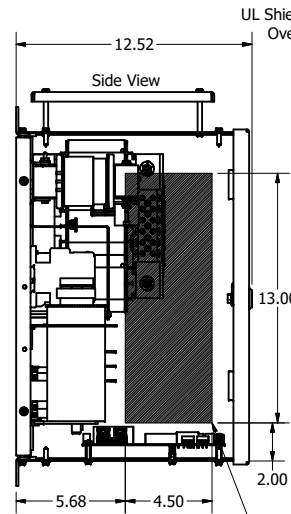
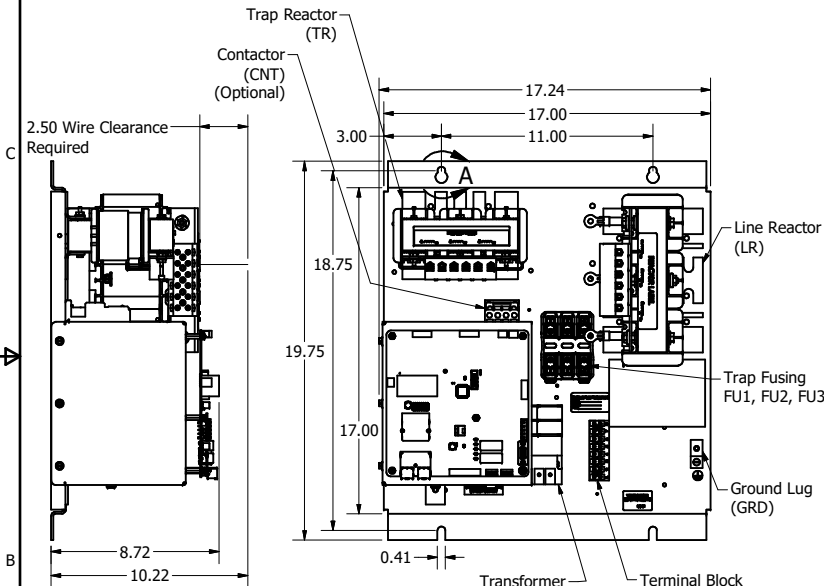
Note: For Torque Information
See IOM Manual

Customer Connections.
L1, T1, L2, T2, L3, T3
Wire Range: 1 AWG to 22 AWG.

Ground Lug
Wire Range: 1/0 to 14 AWG.



DETAIL A
Keyslot



Terminal Block Location
When Supplied.

Suggested Area,
For Customer Wire Entry
And Exit Location

Note: Customer is responsible
for proper cooling of filter
components on open panels.
Capacitors Maximum Ambient 50°C.

HGP0020CW----				
Components	0S0000/1S0000	0C0000/1C0000	0S1000/1S1000	0C1000/1C1000
Line Reactor (LR)	X	X	X	X
Trap Reactor (TR)	X	X	X	X
Capacitor (Cap)	X	X	X	X
Trap Fusing, FU1, FU2, FU3	X	X	X	X
Contactor (CNT)		X		X
Transformer (XFMR)		X	X	X
XFMR Fusing, FU4, FU5		X	X	X
PQConnect Board			X	X

TCI, LLC CLAIMS PROPRIETARY RIGHTS IN THE MATERIAL HEREIN DISCLOSED. IT IS SUPPLIED WITHOUT PREJUDICE TO ANY PATENT RIGHTS OF TCI AND MAY NOT BE REPRODUCED OR USED TO MANUFACTURE ANYTHING SHOWN THEREIN WITHOUT WRITTEN PERMISSION FROM TCI.

TOLERANCES (EXCEPT AS NOTED)			
DECIMAL			
.XX	± .25		
.XXX	± .10		
FRACTIONAL			
± 1/16			
ANGULAR			
± 1°			

Material(s) Shall be RoHS Compliant			
W132 N10611 Grant Drive Germantown, WI 53022			
HarmonicGuard Passive			
HGP, 20HP, 600/3/60, Open and Type 1			
DESIGNED BY	JHM	DATE	06/25/19
DRAWING NO.	108183DG	REVISED BY	JHM
SCALE	1/5	DATE	
SHT 1 OF 1			